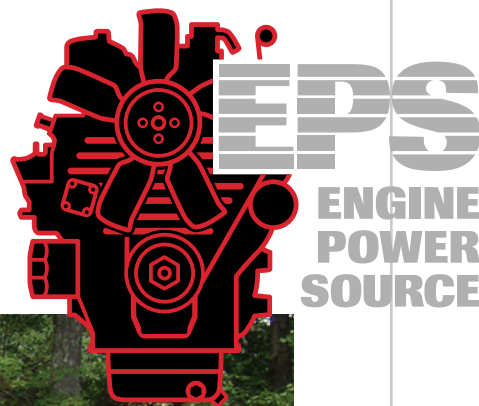


WOOD CHIPPER POWER UNITS



- *Complete power units for repower and O.E.M. applications*
- *Rugged, heavy duty design and performance*
- *Easy to maintain and service*
- *Available with a reliable Kubota diesel tier 3, diesel tier 4 interim, diesel tier 4 final, or gasoline engine*
- *Supported by Kubota's worldwide service network*

Kubota

AUTHORIZED DISTRIBUTOR
ENGINES | GENERATORS | PARTS

MEMBER
TCIA
VOICE OF TREE CARE

A complete line of chipper power units to choose from...

Tier 3 and Tier 4i Diesel Replacement Options



Standard Features

- Angled housing deflects chips and dust away from engine compartment
- High capacity radiator, pusher-type fan system and louver-free enclosure greatly reduce the chances of overheating
- Sealed enclosure with easy-access doors for maintenance
- Heavy-duty muffler system with protective shroud
- Rugged power take-off designed to withstand heavy side loads
- Easy-to-change air filter is located away from chips, dust and other debris
- Heavy-duty oversize clutch, high-inertia flywheel and dual-bearing output shaft for improved reliability
- Locking rod-action throttle eliminates the need for troublesome control cables

Engine Options

- 48 HP Kubota tier 4i (interim) replacement diesel engine
- 66 HP Kubota tier 4i (interim) replacement diesel engine
- 85 HP Kubota tier 3 replacement diesel engine
- 99 HP Kubota tier 3 replacement diesel engine

(See back page for engine specifications)

Kubota®



Air filter is positioned away from chip action



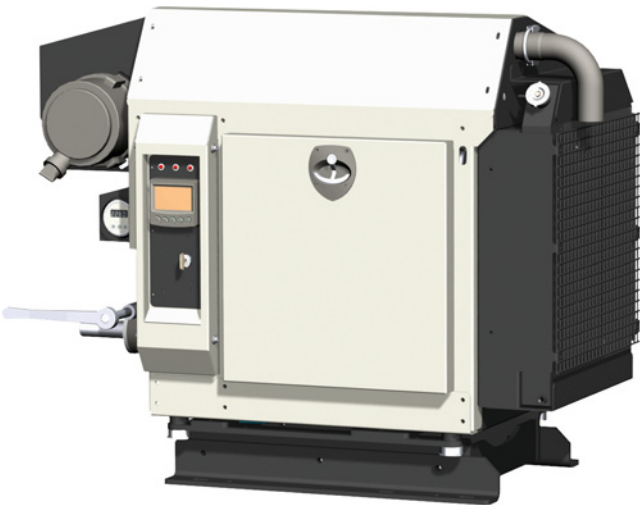
Removable doors for easy service access



Convenient access to engine coolant

powered by tough and dependable Kubota engines.

Tier 4 Final Diesel Unit



Standard Features

- Tier 4 Final compliant for new OEM applications or upgrade repower
- Angled housing deflects chips and dust away from engine compartment
- High capacity radiator, pusher-type fan system and louver-free enclosure
- Sealed enclosure with easy-access doors
- Heavy-duty muffler system with protective shroud
- Rugged power take-off withstands heavy side loads
- Easy-to-change air filter located away from chips
- Heavy-duty oversize clutch, high-inertia flywheel and dual-bearing output shaft for improved reliability
- Electronic throttle control (eliminates control cables)

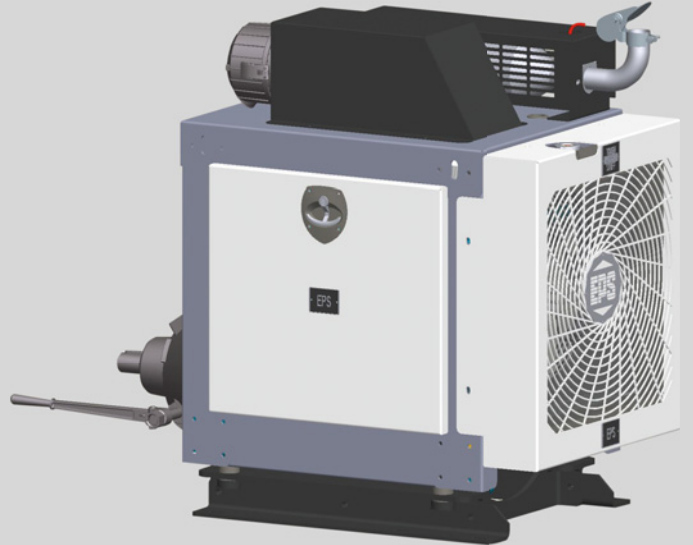
Engine Options

- 74 HP Kubota Tier 4 Final diesel engine
- DOC only technology; no regeneration required

(See back page for engine specifications)



Gasoline Powered Options



Standard Features

- Two gasoline engine options, suitable for new OEM applications or upgrade repower
- High capacity radiator, pusher-type fan system and louver-free enclosure
- Removable side panels for service access
- Heavy-duty muffler system with protective shroud
- Rugged power take-off withstands heavy side loads
- Easy-to-change air filter located away from chips
- Heavy-duty oversize clutch, high-inertia flywheel and dual-bearing output shaft for improved reliability
- Electronic throttle control eliminates the need for troublesome control cables

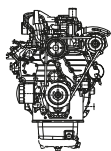
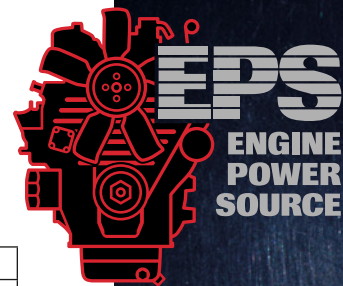
Engine Options

- 61 HP Kubota gasoline engine
- 87 HP Kubota gasoline engine

(See back page for engine specifications)

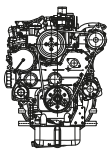


EPS Chipper Power Engine Options



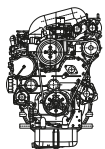
**Kubota Tier 4i
48 HP Diesel Engine**

Model No.	V2203-M-E3B
Emission Reg.	Interim Tier 4 / Stage III A
Engine Type	Vertical 4-cycle Liquid Cooled Diesel
Horsepower	48.1
No. of Cylinders	4
Displacement	2.197 L / 134.1 cu. in.
Intake System	Naturally Aspirated
Rated RPM	2800



**Kubota Tier 4i
66 HP Diesel Engine**

Model No.	V3600-E3B
Emission Reg.	Interim Tier 4 / Stage III A
Engine Type	Vertical 4-cycle Liquid Cooled Diesel
Horsepower	66.8
No. of Cylinders	4
Displacement	3.62 L / 220.9 cu. in.
Intake System	Naturally Aspirated
Rated RPM	2600



**Kubota Tier 3
85 HP Diesel Engine**

Model No.	V3600-T-E3B
Emission Reg.	Tier 3 / Stage III A
Engine Type	Vertical 4-cycle Liquid Cooled Diesel
Horsepower	84.5
No. of Cylinders	4
Displacement	3.62 L / 220.9 cu. in.
Intake System	Turbocharged
Rated RPM	2600



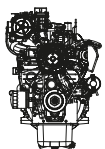
**Kubota Tier 3
99 HP Diesel Engine**

Model No.	V3800DI-T-E3B
Emission Reg.	Tier 3 / Stage III A
Engine Type	Vertical 4-cycle Liquid Cooled Diesel
Horsepower	99.2
No. of Cylinders	4
Displacement	3.769 L / 230.0 cu. in.
Intake System	Turbocharged
Rated RPM	2600



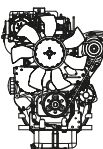
**Kubota Tier 4 Final
74 HP Diesel Engine**

Model No.	V3800-TIE4B
Emission Reg.	Tier 4 / Stage III B
Engine Type	Vertical 4-cycle Liquid Cooled Diesel
Horsepower	74.3
No. of Cylinders	4
Displacement	3.769 L / 230.0 cu. in.
Intake System	Turbo + After Cooler
Aftertreatment	Diesel Oxidation Catalyst
Rated RPM	2200



**Kubota
61 HP Gasoline Engine**

Model No.	WG2503-G-E3
Emission Reg.	EPA Tier 2 / CARB Tier III
Engine Type	Vertical 4-cycle Liquid Cooled Unleaded Gasoline
Horsepower	61.0
No. of Cylinders	4
Displacement	2.491 L / 152.0 cu. in.
Intake System	Naturally Aspirated
Rated RPM	2700



**Kubota
87 HP Gasoline Engine**

Model No.	WG3800-G-E3
Emission Reg.	EPA Tier 2 / CARB Tier III
Engine Type	Vertical 4-cycle Liquid Cooled Unleaded Gasoline
Horsepower	87.2
No. of Cylinders	4
Displacement	3.769 L / 232.0 cu. in.
Intake System	Naturally Aspirated
Rated RPM	2600

Charlotte, NC Area
348 Bryant Blvd.
Rock Hill, SC 29732
704-944-1999

Toll-Free: 800-374-7522

enginepowersource.com